

Improving ONS Migration and Population Statistics

Jonathan Smith

Office for National Statistics Centre for Demography

Presentation Overview

- Overview of ONSCD population statistics
- Recent demographic change
- Improving demographic estimates
- Key deliverables 2008 & 2009
- Focus on improving estimation of student migration
- Conclusions

Overview of ONSCD Demographic Statistics

Current Demographic Products

1. Mid-year Population Estimates
2. National Population Projections
3. Sub-national Population Projections
4. Quarterly population estimates
5. Migration statistics (all UK)
6. Demographic analysis work

Mid-year Population Estimates

- Relates to the *usually resident* population at 30 June each year
- Produced separately for each constituent UK country
- By age, sex and at local authority level
- As at mid-2006 the UK population was 60,587,000
- Uses Cohort Component Methodology

Cohort Component Method

Estimated resident population at time T



Natural Change – add births, subtract deaths



International Migration – add inflows, subtract outflows



Internal Migration – add inflows, subtract outflows



Special Populations – UK armed forces, foreign armed forces, prisoners, school boarders



Estimated resident population at time T+1

Importance of Mid-year Estimates

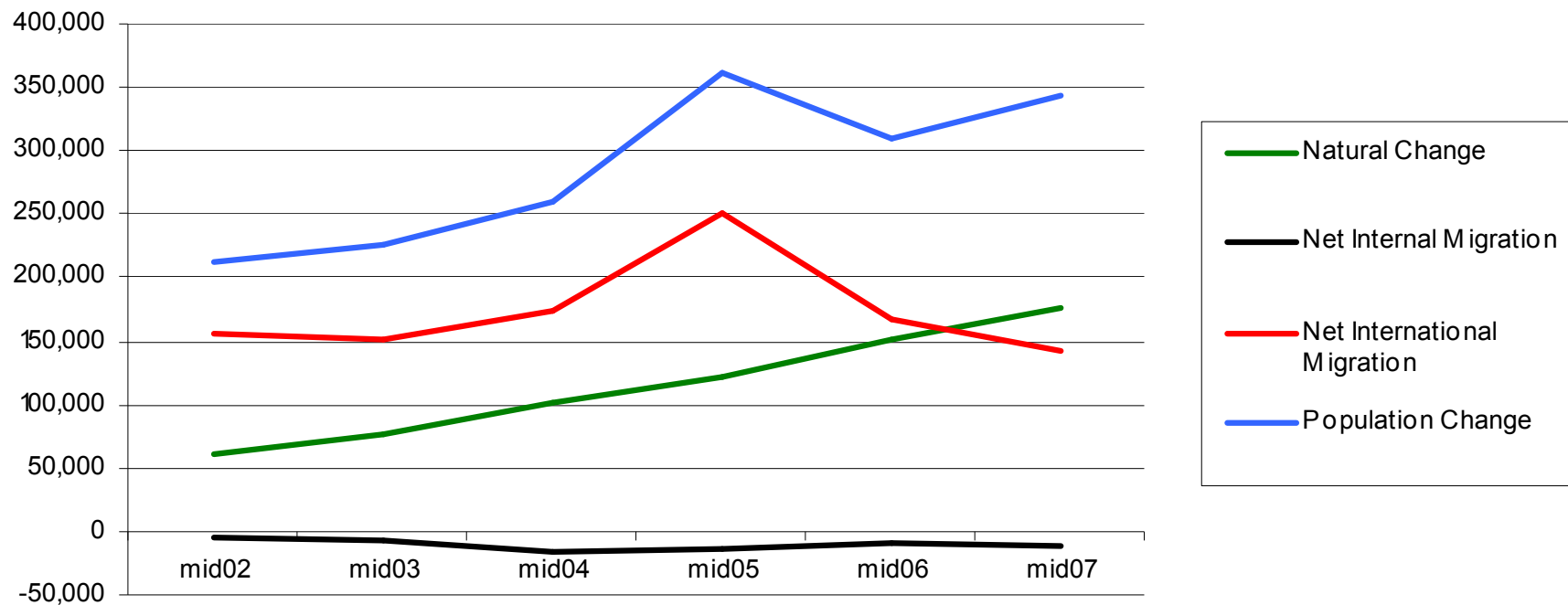
- Local authority resource allocation
- Planning and monitoring service provision
e.g. education and health services
- Grossing up survey results
e.g. Labour Force Survey
- Research by academics
- Denominators in the derivation of rates
e.g. GDP, unemployment rates, mortality & fertility rates

Challenges in making population estimates

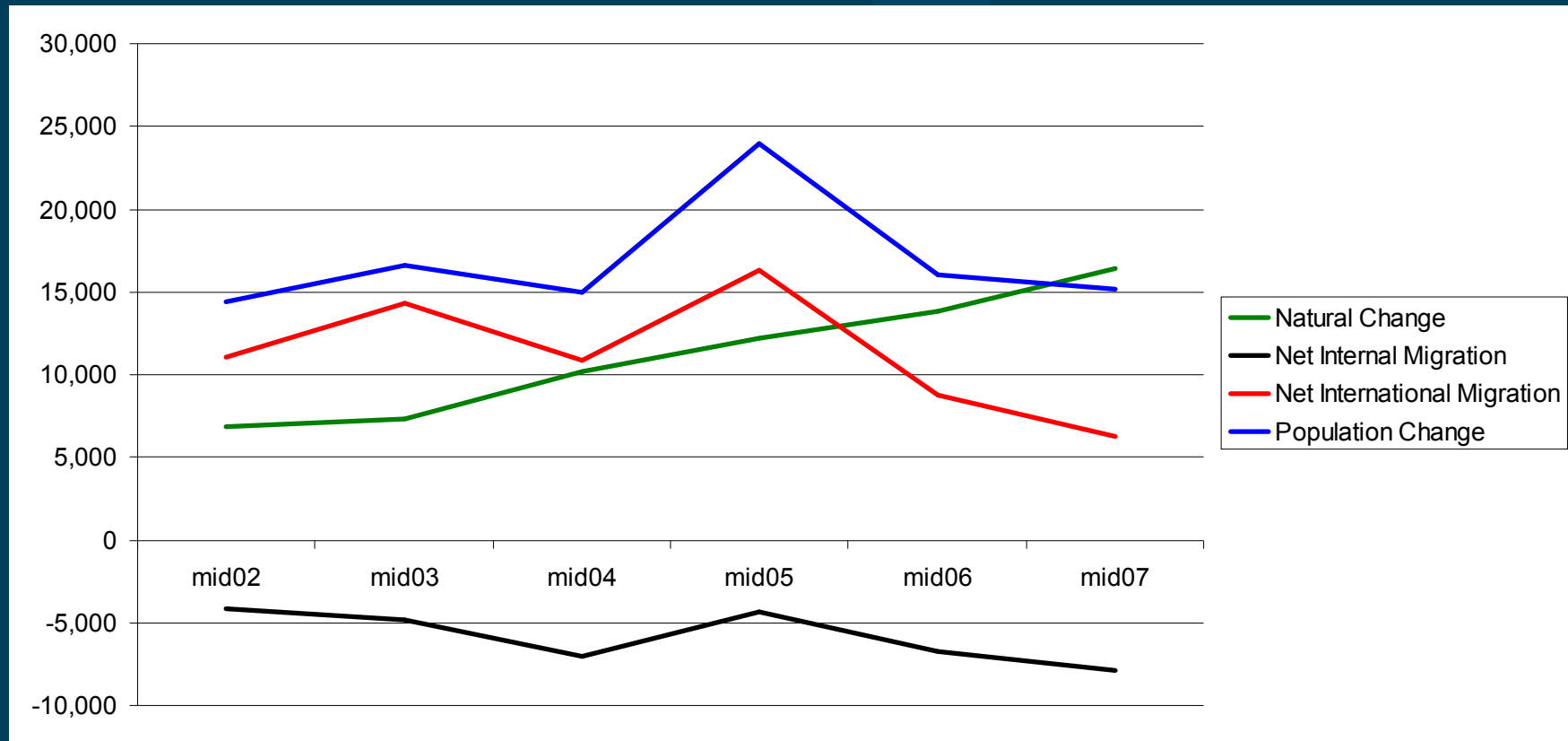
1. Need accurate data for a base and from which to estimate population change
2. Births and deaths data are good quality
3. Accurate estimates of migration particularly difficult
 - international migration
 - internal migration

Recent Demographic Change

Recent demographic change in the England & Wales



Recent demographic change in the West Midlands



Improving Demographic Estimates

Improving Migration and Population Statistics (IMPS)

- IMPS project – response to 2001 Census
- Delivered in 2007
 - Estimation of international migration
 - ‘Population churn’
 - Local authority case studies
 - Short-term migration estimation
- www.statistics.gov.uk/imps

Inter-departmental Task Force on Migration Statistics

- Aim was to identify timely improvements to UK migration statistics
- Set up in May 2006 by National Statistician
- Consisted of representatives from central and local government, devolved administrations and other partners
- Reported in December 2006
- In total 15 separate recommendations made

www.statistics.gov.uk/statbase/Product.asp?vlnk=14731

Taking forward the recommendations

- Involves collaboration with other government departments e.g. Home Office, DCLG, DWP
- Organisation and governance structure set up
- Five inter-departmental working groups to cover the full range of work:
 - Migration Reporting
 - Entry and Exit Data
 - Alternative Sources
 - Local Population Estimates
 - Analysis and Indicators

Key Deliverables 2008 & 2009

Key Deliverables

2008

- Redesigned port survey
- E-Borders initiated
- Legal gateways for data sharing
- Development of new surveys
- Coherent migration reporting
- Research – students, distributions, short term migration

Key Deliverables

2009 and beyond

- Implementation for 2008 MYEs
- Data from e-Borders
- New/redesigned surveys running
- Use of DWP, DCSF and other administrative data
- Record linkage
- Census - 2011

Focus on Improving Estimation of Student Migration

Higher Education Students in the UK

	thousands			
	academic year			
	2000/01	2001/02	2002/03	2003/04
Number of student records	1,991	2,086	2,175	2,247
UK origin	1,760	1,843	1,900	1,947
<i>percentage of total</i>	88.4	88.4	87.3	86.6
Overseas origin	231	243	275	300
<i>percentage of total</i>	11.6	11.6	12.7	13.4

source: HESA

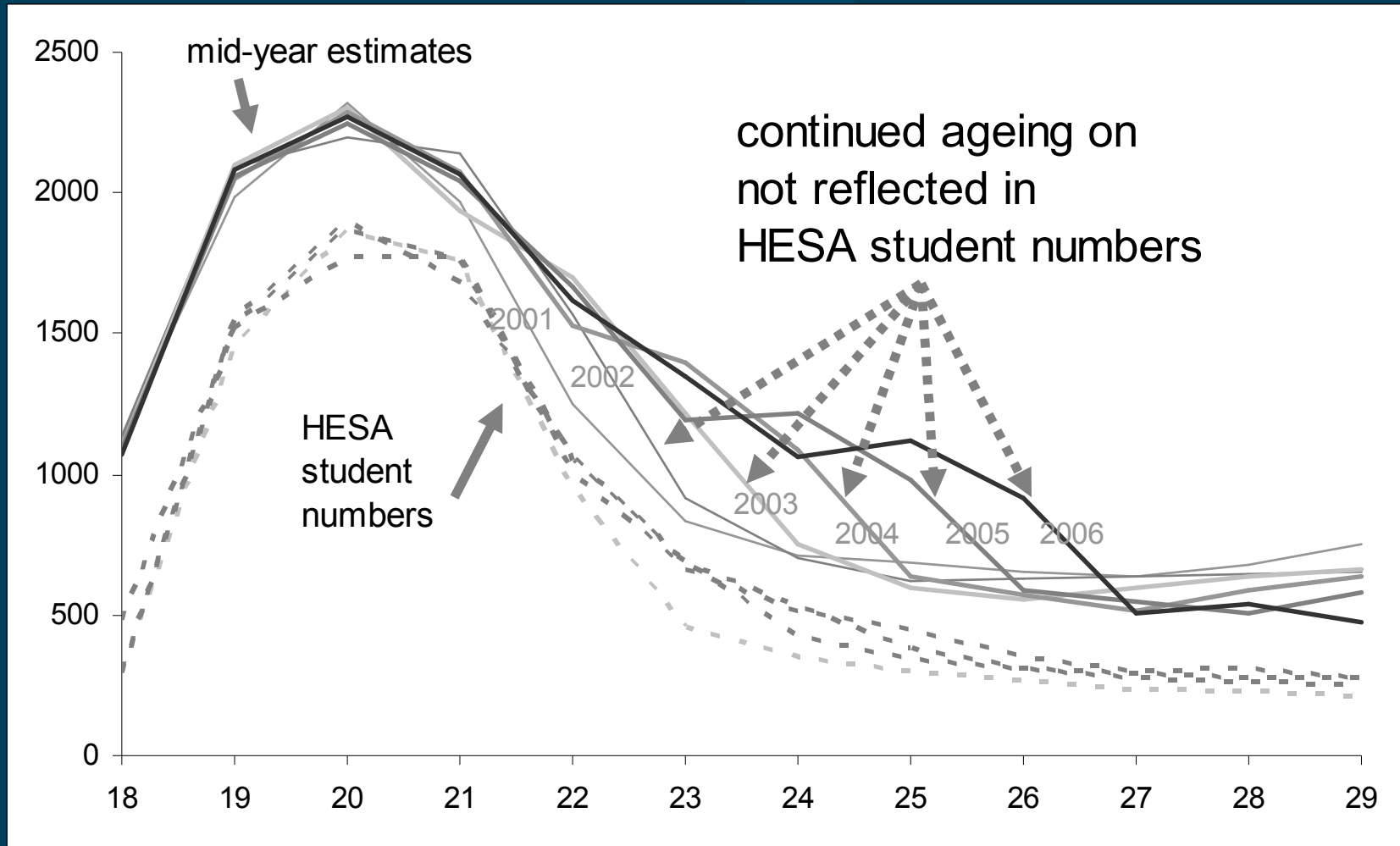
Why the interest?

- Some young people, particularly young men, not changing their GP registration soon after they move
- Students a sub-set of young people, who necessarily cluster in certain areas of the country
- Uncertainty of who is captured in international migration estimates

New data source

- Higher Education Statistics Agency (HESA) data
- Record-level data on all HE students
- New term-time postcode detail to be collected by HESA for all institutions from 07/08. Not available until Jan 09
- Institutions already collect term-time postcode – potential for development work before centrally collected data available

Evidence of issue in current methods



Planned work

- Record linkage
- Do students register with a GP?
- Use of HESA data in estimation

- Proposed case study approach
- Assess data quality
- Test methods

Conclusions

- Improvements already made
- Inter-departmental taskforce recommendations
- New data sources
- Improving existing sources
- Record linkage