

# Connecting Spatial Planning to Economic Development: *a sub-regional perspective*

**Dave Hill**

Economic Strategy Advisor,  
Warwickshire County Council

# Why is it important for the sub-region?

- SNR obviously, but also...
- Growing recognition of the strong inter-relationships between housing, planning, transport, environment and the economy
- Housing growth agenda, building on an established sub-regional planning strategy
- Strong and increasingly closer sub-regional working on a range of issues

# How are we planning on doing it?

- Sub-Regional Economic Assessment & Integrated Strategy
- But not easy ... and will not be done straight away
- Iterative process
- Alignment before integration
- Needs to start now to be able to effectively inform the SIRS

# Significant complexity...

- If based on “real” functional geography:
  - 3 regions
  - 10 LDFs
  - 6 LAAs
  - 6 LTPs
  - 14 (?) Sustainable Community Strategies...!
- Need pragmatism and realism



*Source: LGA – “Thriving Local Communities: Mapping Sub-Regions” (2007)*

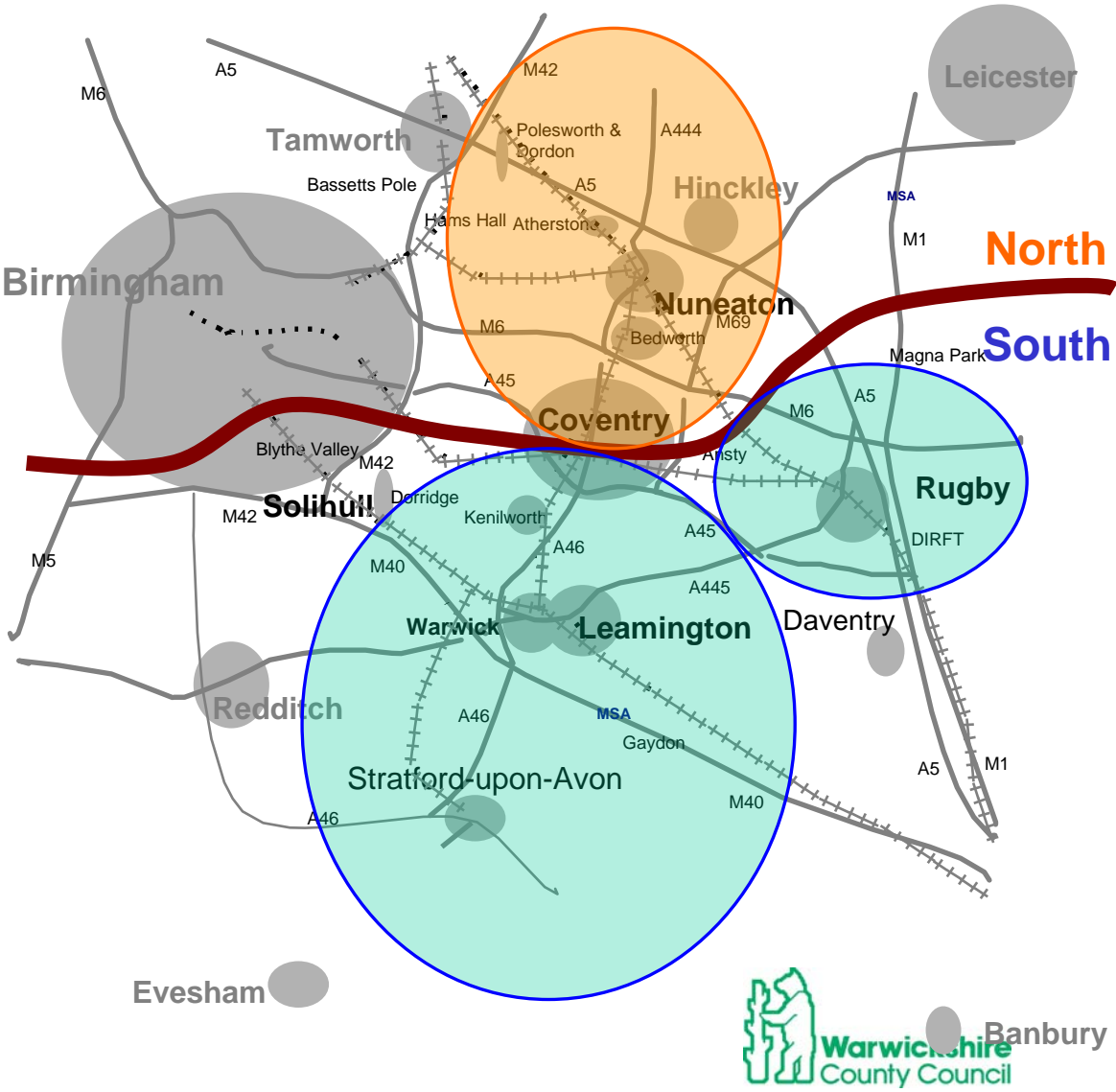
# The role and function of places?

- Do places shape the economy, or the economy shape places?
- Is there a need for low value and high value areas?
- Why do some areas consistently perform better/worse than others? Market choices or market failure?
- What factors do individuals & businesses place premiums on? Are these consistent?

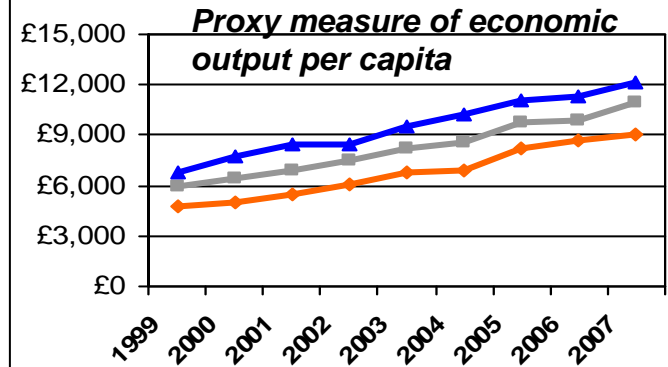
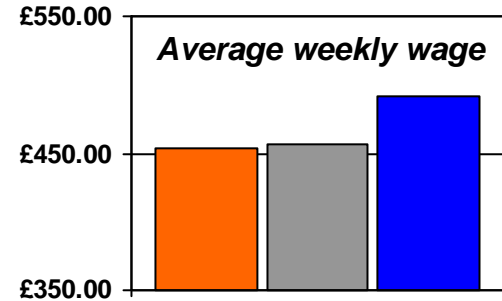


# Some key issues for CSW...

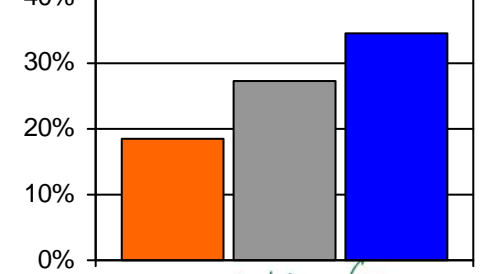
A tale of two economies...?



Key:

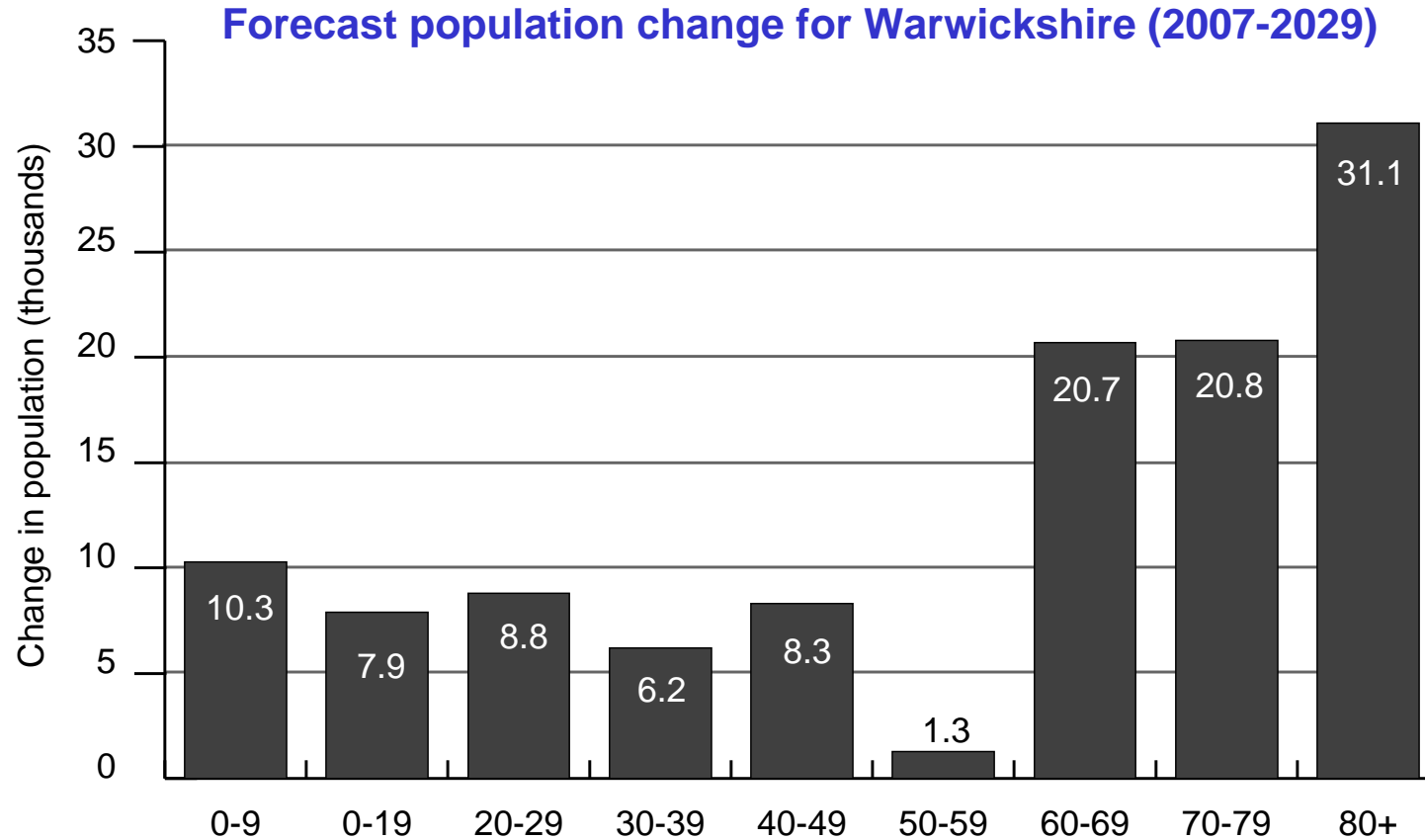


% with degree or equivalent



■ "North"
 ■ UK
 ■ "South"

# Changing demographics...



...will have a strong spatial dimension

## Other areas for investigation

- “Local services” vs. “productive” economy
- Housing location and type – impact on the local economy & community
- Go with or against market forces? Equity vs. efficiency
- Energy, environmental and waste implications of different spatial patterns of growth
- Role of technology in changing spatial patterns

Any questions...?