

West Midlands Regional Summary of Family Spending 2009: a report on the 2008 Living Costs and Food Survey

Press Notice <http://www.statistics.gov.uk/pdfdir/fs0110.pdf>

CONTENTS

Introduction.....	p2
Household Income.....	p2
Chart 1: average weekly household gross income by region	
Chart 2: average weekly household gross disposable income by region	
Chart 3: source of household income in the West Mids compared to England average	
Total Household Expenditure.....	p3
Chart 4: average weekly total expenditure per household by region	
Chart 5: average weekly total expenditure per person by region	
Household Expenditure on Mortgage & Rent.....	p4
Chart 6: average weekly household expenditure on mortgages by region	
Chart 7: average weekly household expenditure on rent by region	
Types of Household Expenditure.....	p5
Chart 8: average weekly household expenditure on commodities/services in West Mids & England	
Households with Durable Goods.....	p6
Chart 9: percentage of households with durable goods in the West Mids compared to England	

Introduction

The 2009 edition of Family Spending, reporting on the 2008 Living Costs and Food Survey was released by the Office for National Statistics on 14 January 2010. The Expenditure and Food Survey (EFS) was renamed the Living Costs and Food Survey (LCF) in 2008 when it became a module of the Integrated Household Survey (IHS). The design of the LCF is based on the EFS and the same basic questions are asked. The sample is approximately 5,300 households in Great Britain.

Household Income

Average Weekly Household Gross Income (Chart 1) was £622.30 in the West Midlands, 9 per cent below the England average of £683.00. Across the regions gross income ranged from £900.20 in London, 32 per cent above the England average, to £537.90 in the North East, 21 per cent below the England average.

Average Weekly Disposable Income (Chart 2) in the West Midlands was £508.60, 8 per cent below the England average of £553.70. Across the regions gross disposable income ranged from £711.80 in London, 29 per cent above the England average, to £449.40 in the North East, 19 per cent below the England average.

Chart 1: average weekly household gross income by region

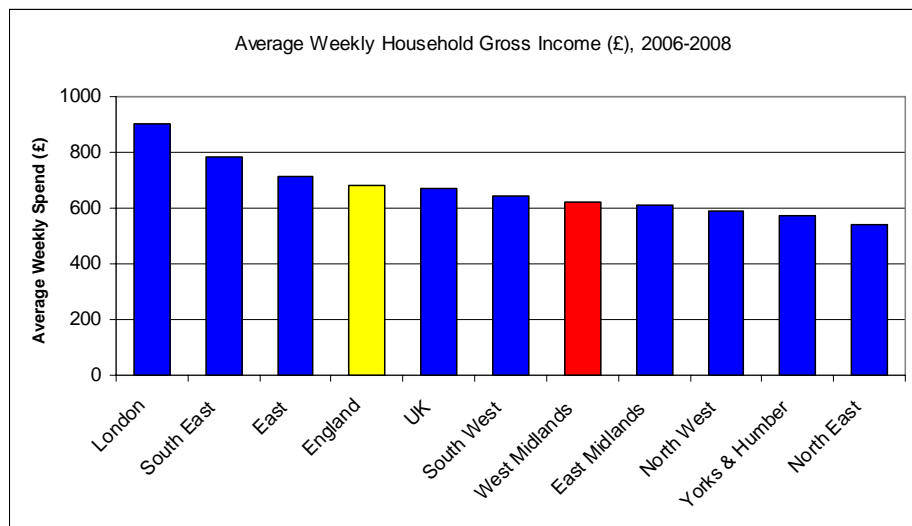
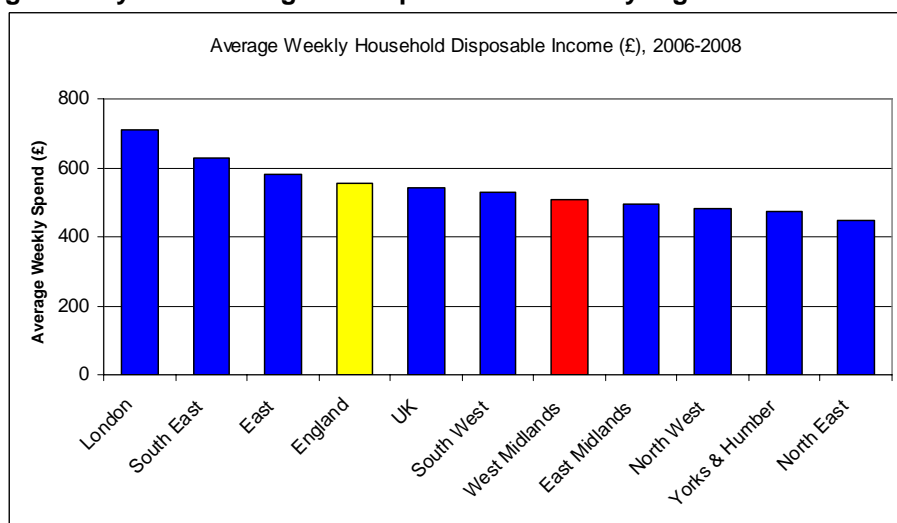


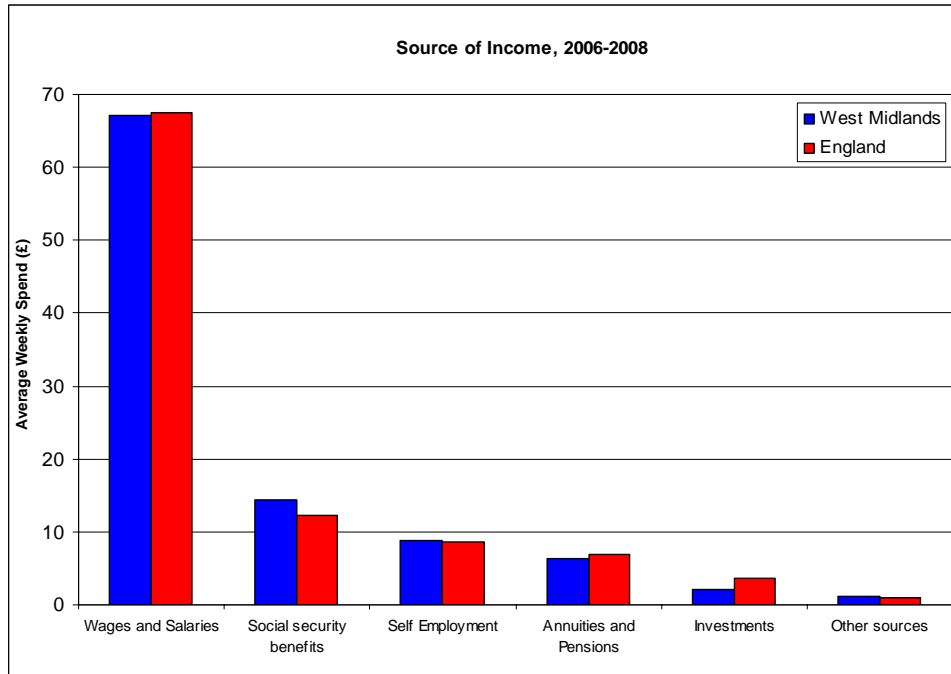
Chart 2: average weekly household gross disposable income by region



In the West Midlands the primary source of income (Chart 3) was wages & salaries at 67.2 per cent, compared to 67.5 per cent in England (highest is London at 73 per cent, lowest is South West at 62 per cent). A higher proportion of income comes from social security benefits in the West Midlands at 14.4 per cent.

cent, compared to 12.2 per cent in England (highest is North East at 17.2 per cent, lowest is London at 8.3 per cent). A lower proportion of income in the West Midlands came from investments at 2.2 per cent, compared to 3.7 per cent in England (highest is London at 5.4 per cent, lowest is North East at 1.7 per cent).

Chart 3: Source of income in the West Midlands compared to England average



Household Expenditure

Average weekly total expenditure per household (Chart 4) was £437.10 in the West Midlands, 6 per cent lower than the England average of £465.20. Across the regions gross income ranged from £544.70 in London, 17 per cent above the England average, to £386.10 in the North East, 17 per cent below the England average.

Average weekly total expenditure per person (Chart 5) was £177.90 in the West Midlands, 10 per cent below the England average of £197.00. Across the regions total expenditure per person ranged from £222.20 in London, 13 per cent above the England average, to £163.60 in the North East, 17 per cent below the England average.

Chart 4: average weekly total expenditure per household by region

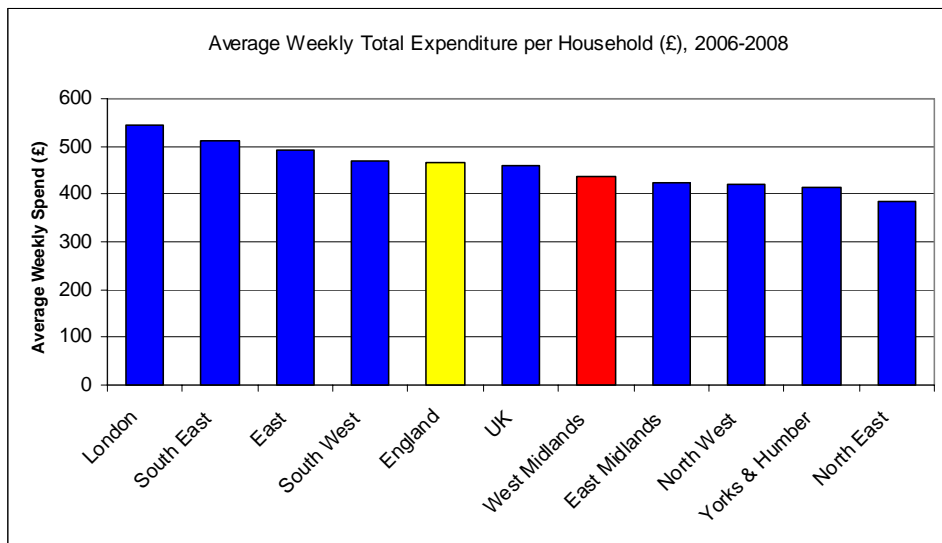
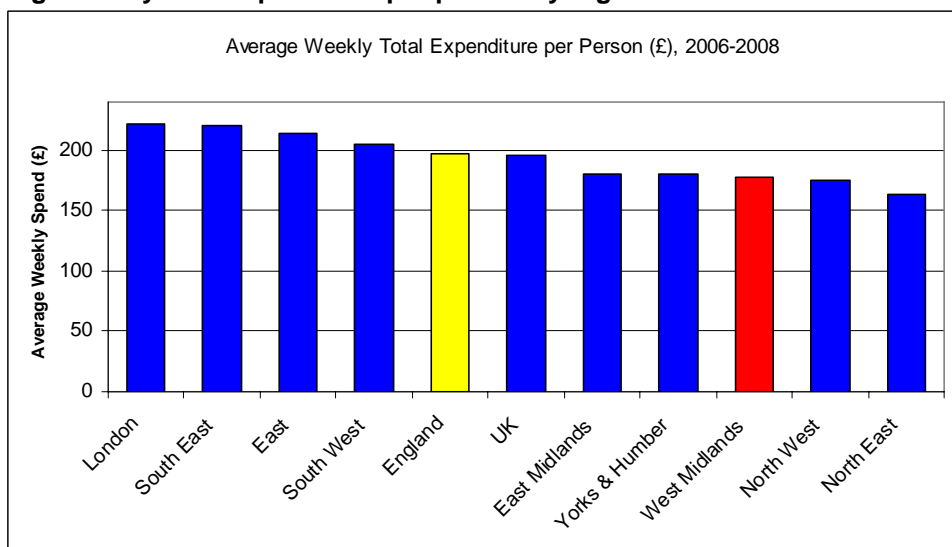


Chart 5: average weekly total expenditure per person by region



Household Expenditure on mortgages and rent

Average weekly household expenditure on mortgages by mortgage holders (Chart 6) was £147.30 in the West Midlands, 5 per cent below the England average of £154.40. Across the regions expenditure on mortgages ranged from £216.10 in London, 40 per cent above the England average, to £114.80 in Yorkshire & Humber, 26 per cent below the England average.

Average weekly household expenditure on rent by renters (Chart 7) was £92.70 in the West Midlands, 17 per cent below the England average of £111.70. Across the regions expenditure on rent ranged from £161.90 in London, 45 per cent above the England average, to £83.00 in Yorkshire & Humber, 26 per cent below the England average.

Chart 6: average weekly household expenditure on mortgages by region

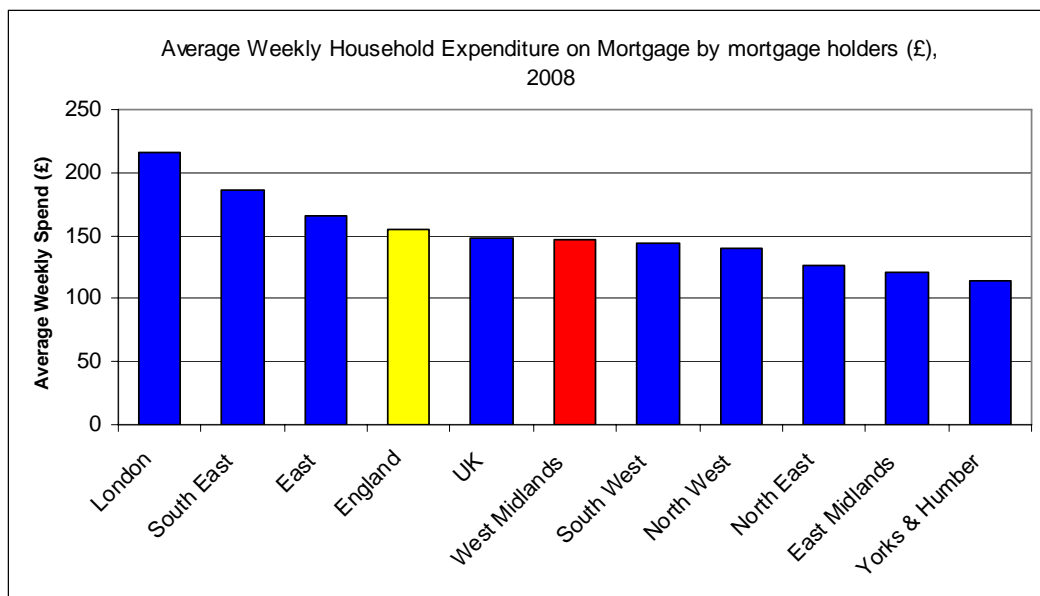
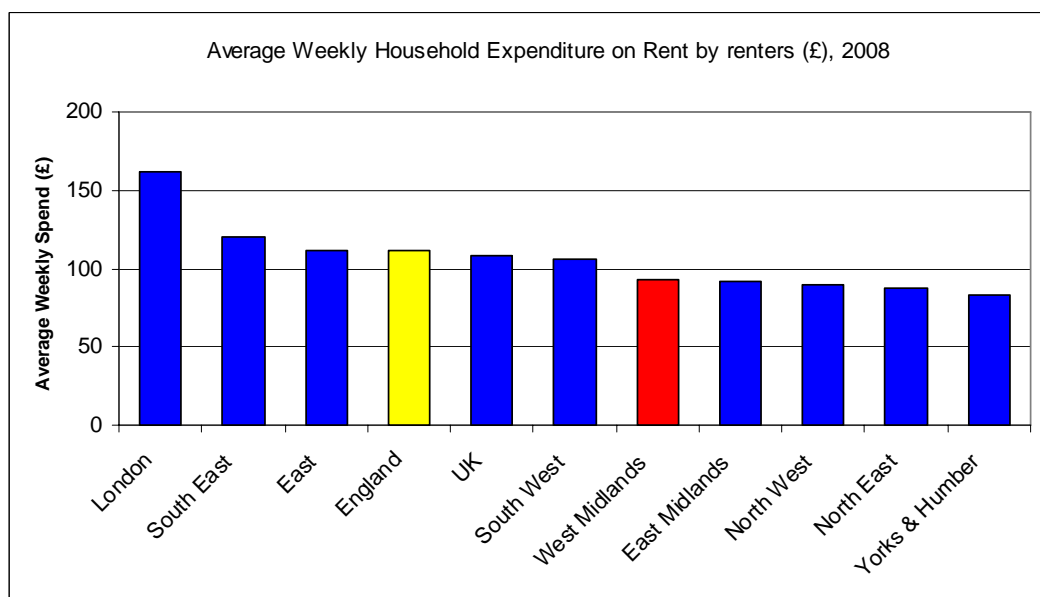


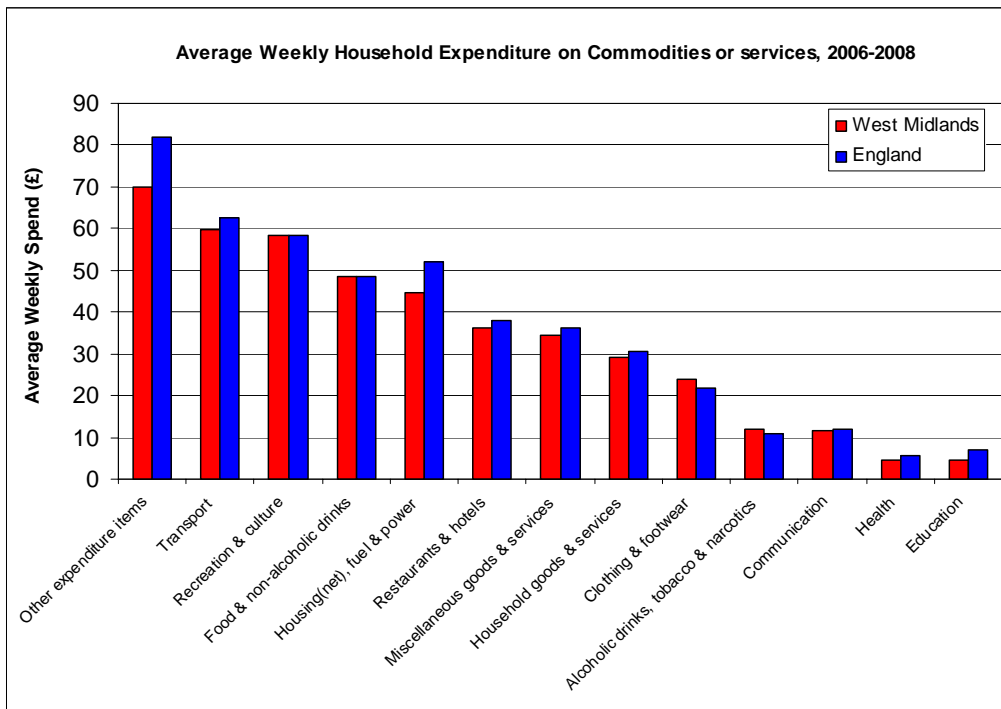
Chart 7: average weekly household expenditure on rent by region



Types of household expenditure

In the West Midlands the largest spend was on Transport at £59.60 compared to £62.50 in England (Chart 8). This was followed by recreation & culture at £58.30, (England, £58.30), and Food & non-Alcoholic drinks at £48.60 (England, £48.40). The lowest spend was on Health at £4.70 (England, £5.80), and Education at £4.60 (England, £7.10)

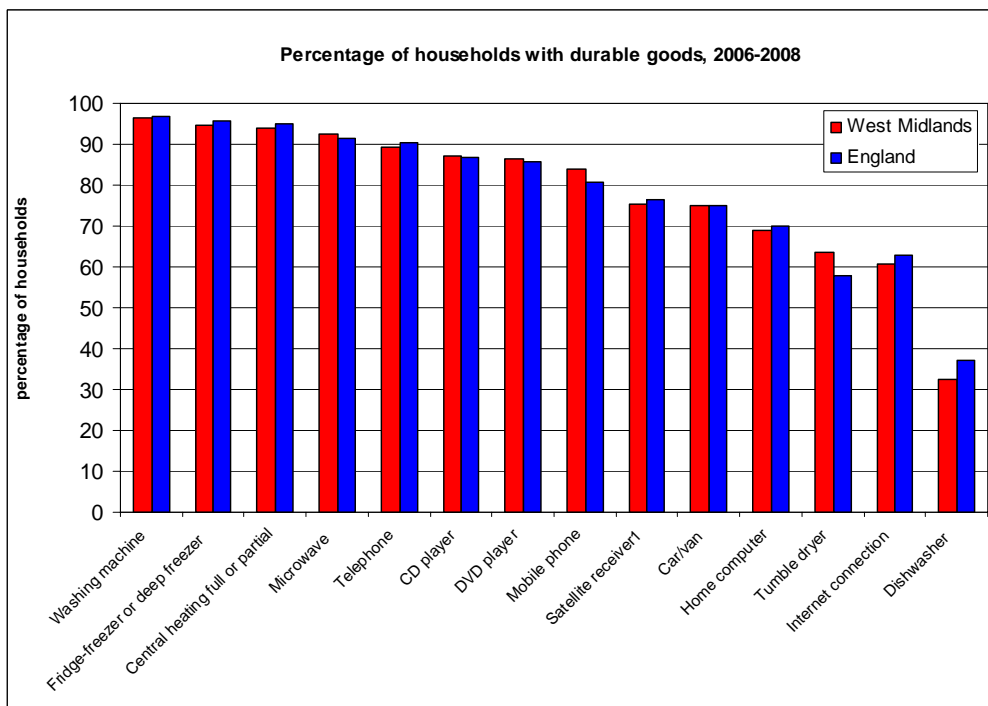
Chart 8: average weekly household expenditure on commodities or service in West Mids & England



Households with durable goods

The survey indicates that 96.6 per cent of households in the West Midlands had a washing machine (Chart 9), a similar figure as for England (96.8 per cent). Households in the West Midlands were less likely to have a home computer compared to the England average (69 per cent vs 70.1 per cent), less likely to have an internet connection (60.7 per cent vs 62.7 per cent), and less likely to have a dishwasher (32.4 per cent vs 37.1 per cent). Households in the West Midlands were more likely to have a microwave compared to the England average (92.5 per cent vs 91.4 per cent), more likely to have a mobile phone (84.1 per cent vs 80.6 per cent), and more likely to have a tumble dryer (63.5 per cent vs 57.9 per cent)

Chart 9: percentage of households with durable goods in the West Midlands compared to England



More details about the Living Costs & Food Survey can be found using the following links

Link to key documents/data set out below (<http://www.statistics.gov.uk/StatBase/Product.asp?vlnk=361>)

[Full report](#)

Click on the tables in the report to download underlying data

[Table 2.11](#)

Expenditure on rent and mortgages

[Table A35](#)

Household expenditure by Government Office Region

[Table A44](#)

Income and source of income by Government Office Region

[Table A53](#)

Percentage of households with durable goods by Government Office Region